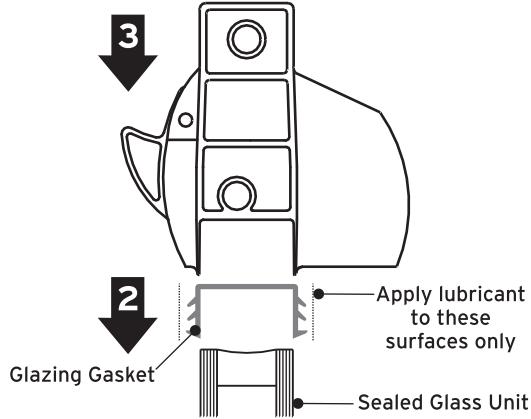


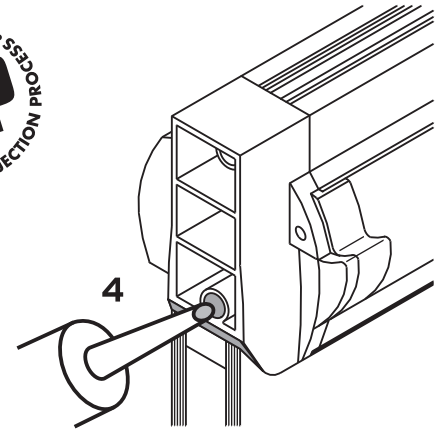
Stage 1



1. Cut glazing gasket to:-
 - Vent length (including end caps) less 51 mm or
 - Extrusion length (no end caps) plus 6 mm
 - Tolerance for gasket length -3 mm + 0 mm
2. Push gasket centrally on to top edge of glass unit.
3. Firmly and evenly push the ventilator onto gasket, where glass is oversize or tight, lubricate gasket with soapy water, see above.

WARNING - Lubricant containing Silicone may be incompatible with some types of coated glass. Please refer to glass manufacturer's technical specification.

Stage 2



4. **VIP must** be used to prevent ingress of air and water. Use sealant gun to inject sealant slowly into lower screw hole of end cap until sealant is visible between top of glass and end cap, see above. Wipe away any excess sealant.

Position vent & glass in window and glaze in normal manner, do not use packing blocks against end caps.

WARNING - Silicone sealant may be incompatible with some types of coated glass. Please refer to glass manufacturer's technical specification.