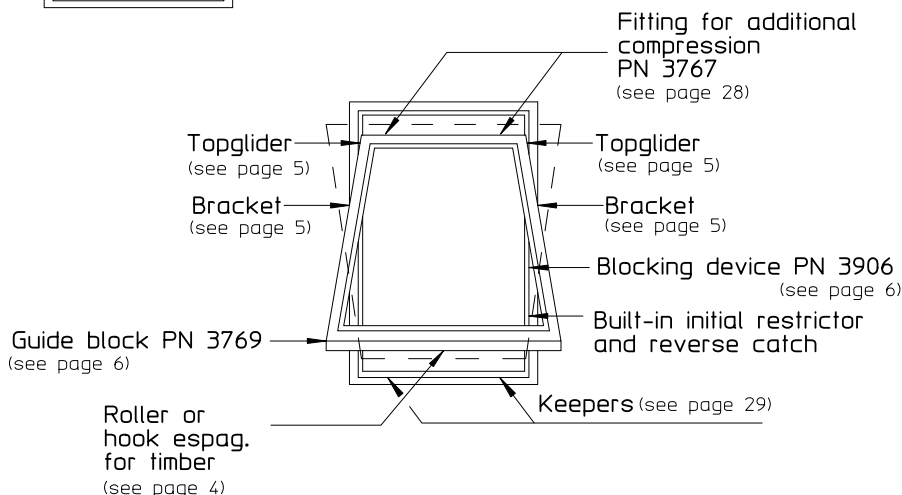


Top Swing gearing for timber windows

Uni Top Swing gear
 PN 3776 - 3799
 (see page 4)

Max. sash weight for all
 Top Swing gearing is 60 kg.



* The small sizes PN 3776 - 3790 has a short centre boss for easy fitting in connecting with PN 3870, 0443 and 0444 brackets

Special gearing for hotels, schools etc. The sash can be closed without operating the "PRESS" button.
 Made to order only. See page 3b.

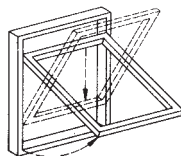
Uni Top Swing Gear									
PN no.	Sash height in mm.			F dim. mm	Gear length mm	Max. opening height cm	Stamped at the top	Special PN no.	
	Min. sash	Best choice (Gives min. overswing)	Max. sash						
* 3776	458	458 537	558	238	524	30	6	0476	
* 3790	515	537 579	615	264	580	34	6,5	0490	
3777	558	579 637	658	288	624	36	7	0477	
3791	615	637 679	715	312	680	41	7,5	0491	
3778	658	679 737	758	338	724	43	8	0478	
3792	715	737 779	815	364	780	46	8,5	0492	
3779	758	779 837	858	388	824	50	9	0479	
3793	815	837 879	915	412	880	53	9,5	0493	
3780	858	879 937	958	438	924	56	10	0480	
3794	915	937 979	1015	458	980	60	10,5	0494	
3781	958	979 1037	1058	488	1024	63	11	0481	
3795	1015	1038 1079	1115	512	1080	66	11,5	0495	
3782	1058	1079 1137	1158	538	1124	69	12	0482	
3796	1115	1138 1179	1215	564	1180	73	12,5	0496	
3783	1158	1179 1237	1258	588	1224	78	13	0483	
3797	1215	1238 1279	1315	612	1280	80	13,5	0497	
□ 3784	1258	1279 1337	1358	638	1324	83	14	0484	
□ 3798	1315	1338 1379	1415	664	1380	86	14,5	0498	
□ 3785	1358	1379 1437	1458	688	1424	89	15	0485	
□ 3799	1415	1438 1479	1515	712	1480	92	15,5	0499	
□ 3786	1458	1479 1537	1558	738	1524	96	16	0486	

If min. sash is used the gear must be cut and the F-dim reduced by the same amount

Jig for F-dimension is available PN 0799

- The alu-track has been squized top and bottom in these sizes to give friction

M377691-100

**TOP SWING GEAR (special applications)**

PN Uni Topswing (special applications) gearing introduced for use in hotels, schools and specifications when simple opening and closing is needed or access to the gearing is reduced. The unique turn lever allows the user to provide a blowback facility when required without the need for additional hardware or cost.

The restrictor maintains its safety features on the open out movement of the window and then allows the user to pull the window closed when the turn lever attached to the restrictor is not set to hold open the window.

Recommended frame size widths 550-1600mm
(height to width ratios are the same as standard hinges).

- Angled opening to achieve emergency escape depending on structural size of opening
- Casement weight maximum 60kg
- Fixed restricted positions allowing for both ventilation and cleaning
- Groove fixing
- Integral restrictor and reverse catch
- Turn lever hold open option - standard on all sizes
- Fully reversible
- Conforms to BS6375 Part 2
- Successfully tested to BS7950

Set should include Hinges, Top Gliders* and Brackets* and Stop Blocks x 2 (3820-090-10).

See page 6 (To avoid the sash hitting frame or brickwork and being damaged in the reverse position).

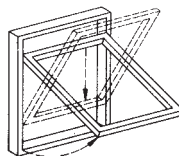
* Profile Related

Optional extras:

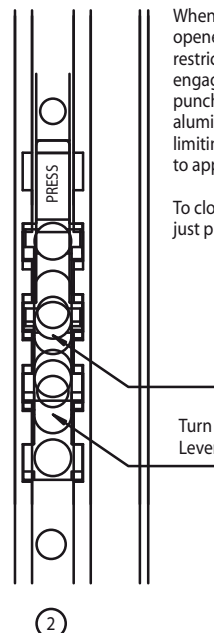
(3769-0-90-10) Guide Block (see page 6)

(3906-0-90-00) Blocking Device (see page 6)

(3822-0-90-10) Support Hardware (for BS 7950) (see page 28)



When the window is closed the restrictor is depressed below the aluminium track and is not engaged.



When the window is opened the integral restrictor will move and engage into the pre punched slots in the aluminium track thus limiting the movement to approx. 100mm.

To close the window just pull closed.

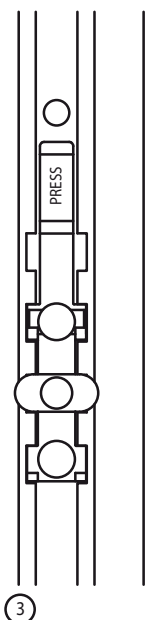
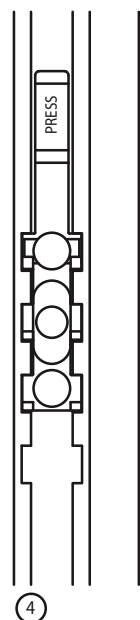


Figure 3 illustrates the position of the integral restrictor when the window is open at 100mm. If hold open is required the turn lever must be rotated 90° so it is horizontal as illustrated. Turn lever must be returned to the vertical position as in Fig. 2 before closing the window. To close the window just pull closed.



To open the window past the first restricted position open as in Fig. 2.

*If an additional blocking device is fitted this should be removed with the key provided.

Ensure the turn lever is in the correct position (as Fig. 2). Press down the restrictor into the aluminium track whilst controlling the window. Once released push until the restrictor engages into the second pre punched slots in the aluminium track. To close the window just pull closed.

*Any additional blocking device should be reinstalled before closing.

PN UNI SYSTEM

HARDWARE FOR WINDOWS

TEST REPORTS

Testing for Operation and Strength

Test report No.	Window Size Widthx Height mm	PN UNI Fitting	Tested Windows/Fittings	Equivalent to test specification
261/4411796/1 of 15	1200 x 1200 mm	PN Uni Top Swing Gear for Fully Reversible Windows	PVC-U Window	BS 7950:1997
261/4411796/2 of 15	1200 x 1200 mm	PN Uni Side Swing Gear for Fully Reversible Windows	PVC-U Window	BS 7950:1997
261/4411796/3 of 15	1200 x 1200 mm	PN UNI Side Swing Gear for Fully Reversible Windows	Timber Window	BS 7950:1997
261/4411796/4 of 15	1200 x 1200 mm	PN Uni Top Swing Gear for Fully Reversible Windows	Timber Window	BS 7950:1997
261/4411796/9 of 15	1200 x 1200 mm	PN Uni Top Swing Gear for Fully Reversible Windows	Timber Window	BS 7950:1997
261/4411796/10 of 15	1200 x 1200 mm	PN Uni Side Swing Gear for Fully Reversible Windows	PVC-U Window	BS 6375: Part2:1987
261/4411796/11 of 15	1200 x 1200 mm	PN Uni Side Swing Gear for Fully Reversible Windows	Timber Window	BS 6375: Part 2:1987
BG000546/A	1588 x 1588 mm	PN Uni Top Swing Gear for Top Hung fully Reversible Windows	Timber Window	BS 6375: Part 2:1987
BG000546/B	1588 x 1588 mm	PN Uni Friction Stay Hinges for Projecting Top Hung Windows	Timber Window	BS 6375: Part 2:1987
BG000546/E	888 x 1588 mm	PN Uni Friction Stay Hinges for Projecting Side Hung Easy Clean Windows	Timber Window	BS 6375: Part 2:1987

PN Uni Fittings are manufactured to certified Quality System DS/EN ISO 9001:2000

Manufacturer

A/S PEDER NIELSEN BESLAGFABRIK

NØRREGADE 25 . 9700 BRØNDERSLEV . DENMARK

Tel. +45 96 45 56 56 . Fax +45 96 45 56 57 .

E-mail: info@pn-beslag.dk . Internet: www.pn-beslag.dk