

---

## Application and Selection - RESTRICTOR STAYS

---

### Application

#### General:

- 2.1.1 The Domestic and Commercial Restrictor Stays/Detachable Restrictor Stays\* give an opportunity to permanently restrict opening vents, particularly useful in applications where child safety is required or where windows open out onto corridors or gangways.

\*Key operated version available for cleaning/maintenance requirements of commercial windows.

#### Operation:

- 2.1.2 In normal operation the restrictor stay allows the vent to open until the slider engages against the crack stop of the track.
- 2.1.3 In normal operation the detachable restrictor stay allows the vent to open until the slider engages against the crack stop of the track, the user can then detach the restrictor through the use of a release key.

### Selection

#### General:

- 2.1.4 Designed to be fitted to the same part of the profile as the vent arm and track will suit virtually any profile that can use Securistyle Hinges.
- 2.1.5 For fixed permanent restriction: -
- Domestic Windows - **RS4**
  - **RS6**
  - **RS9**
  - Commercial Windows - **SR4**
  - **SR8**
  - **SR16**
- 2.1.6 For key releasable restriction of Commercial Windows - **SDR4**
- **SDR6**
  - **SDR8**
  - **SDR10**

---

It is the responsibility of the user to ensure that this document is at the latest issue.

Due to our policy of continual product improvement we reserve the right to alter specifications without notice.

It is the responsibility of the window manufacturer to ensure that the finished window meets the required performance and safety specification.



# ANCILLARY DEVICES

RESTRICTOR STAYS

SECTION 2.1 SHEET 2 of 12

ISSUE: September, 2008

## FITTING INSTRUCTIONS: Position and Clearances

### Domestic Restrictor Stays

- 2.1.7 The Domestic Restrictor Stays are designed to be fitted between two flat and parallel rigid faces that conform to the measurements shown below.
- 2.1.8 The vent and outer frame location recess or up stand, if any, must be as shown in Fig. 1.

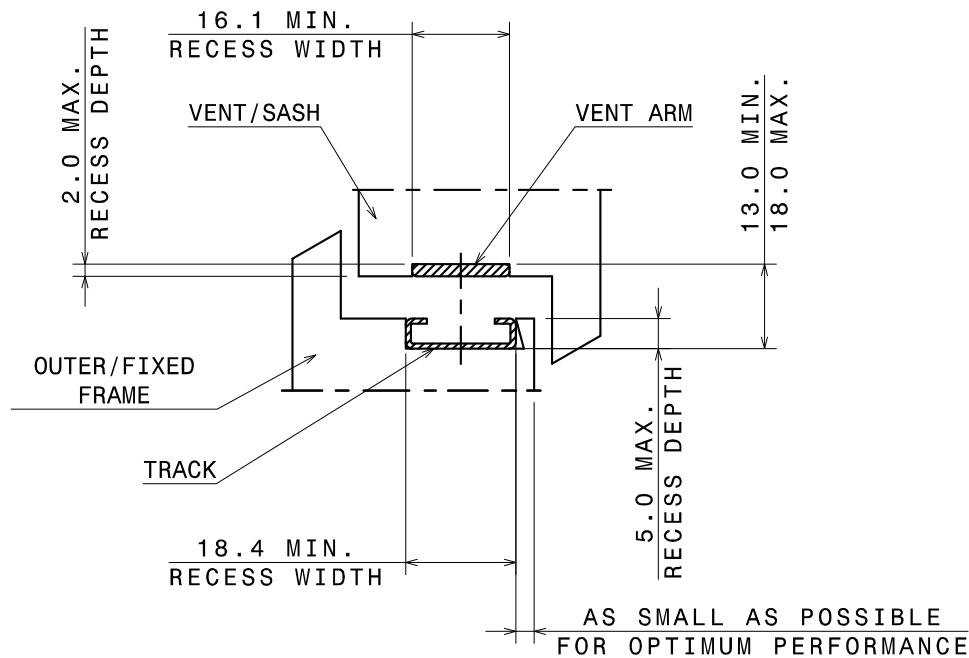


Fig. 1

**Not to Scale, All dimensions in mm**

It is the responsibility of the user to ensure that this document is at the latest issue.

Due to our policy of continual product improvement we reserve the right to alter specifications without notice.

It is the responsibility of the window manufacturer to ensure that the finished window meets the required performance and safety specification.

© SECURISTYLE LTD 2008



Securistyle Ltd.  
Kingsmead Industrial Estate  
Princess Elizabeth Way, Cheltenham,  
Gloucestershire, GL51 7RE  
Tel: +44 (0) 1242 221200  
Fax: +44 (0) 1242 520828  
Web: [www.securistyle.co.uk](http://www.securistyle.co.uk)

# ANCILLARY DEVICES

RESTRICTOR STAYS

SECTION 2.1 SHEET 3 of 12

ISSUE: September, 2008

## FITTING INSTRUCTIONS: Position and Clearances

### Commercial Restrictor Stays

2.1.9 The Commercial Restrictor Stays are designed to be fitted between two flat and parallel rigid faces that conform to the measurements shown below.

2.1.10 The vent and outer frame location recess or up stand, if any, must be as shown in Fig. 2.

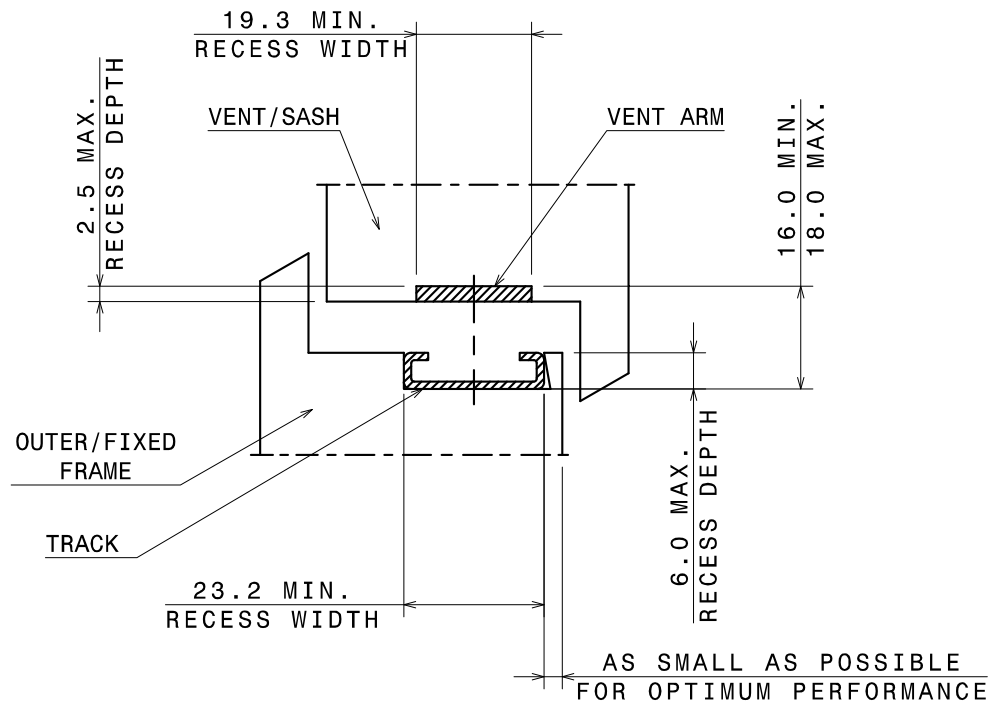


Fig. 2

**Not to Scale, All dimensions in mm**

It is the responsibility of the user to ensure that this document is at the latest issue.

Due to our policy of continual product improvement we reserve the right to alter specifications without notice.

It is the responsibility of the window manufacturer to ensure that the finished window meets the required performance and safety specification.

© SECURISTYLE LTD 2008



Securistyle Ltd.  
Kingsmead Industrial Estate  
Princess Elizabeth Way, Cheltenham,  
Gloucestershire, GL51 7RE  
Tel: +44 (0) 1242 221200  
Fax: +44 (0) 1242 520828  
Web: [www.securistyle.co.uk](http://www.securistyle.co.uk)

# ANCILLARY DEVICES

RESTRICTOR STAYS

SECTION 2.1

SHEET 4 of 12

ISSUE: September, 2008

## FITTING INSTRUCTIONS: Position and Clearances

### Commercial Detachable Restrictor Stays

2.1.11 The Commercial Restrictor Stays are designed to be fitted between two flat and parallel rigid faces that conform to the measurements shown below.

2.1.12 The vent and outer frame location recess or up stand, if any, must be as shown in Fig. 3.

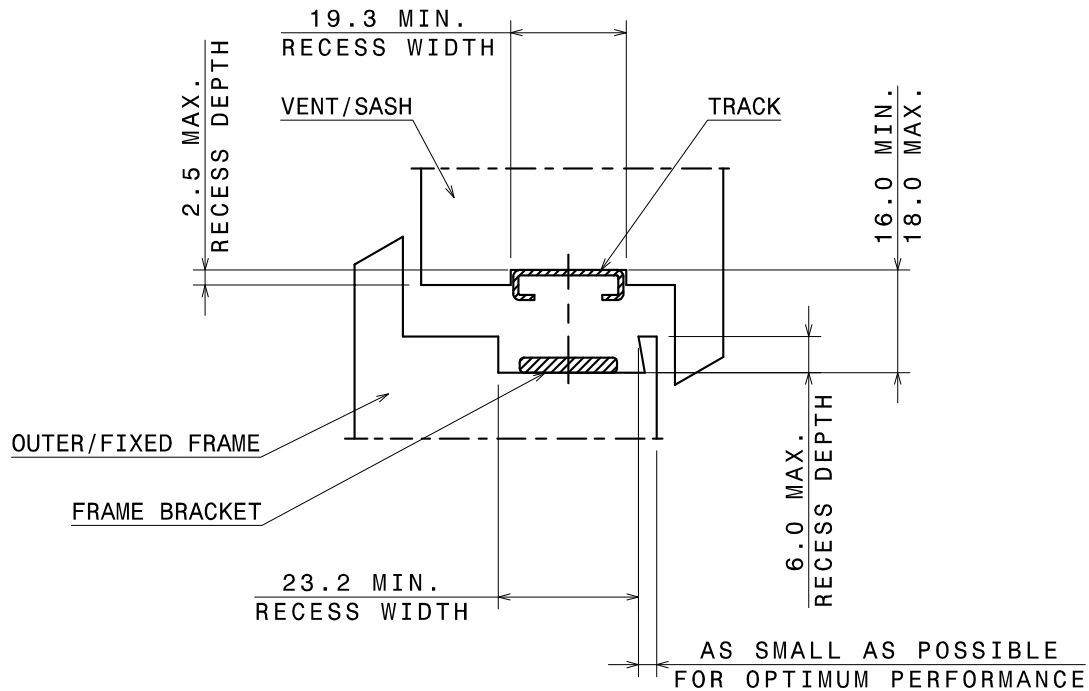


Fig. 3

**Not to Scale, All dimensions in mm**

It is the responsibility of the user to ensure that this document is at the latest issue.

Due to our policy of continual product improvement we reserve the right to alter specifications without notice.

It is the responsibility of the window manufacturer to ensure that the finished window meets the required performance and safety specification.

© SECURISTYLE LTD 2008



Securistyle Ltd.  
Kingsmead Industrial Estate  
Princess Elizabeth Way, Cheltenham,  
Gloucestershire, GL51 7RE  
Tel: +44 (0) 1242 221200  
Fax: +44 (0) 1242 520828  
Web: www.securistyle.co.uk

# ANCILLARY DEVICES

RESTRICTOR STAYS

SECTION 2.1 SHEET 5 of 12

ISSUE: September, 2008

## FITTING INSTRUCTIONS: Vent and Frame Preparation and Fitting

### Vent Preparation and Fitting of Restrictor Stays

#### Preparation:

- 2.1.13 No routing of the profile is required unless the profile silhouette does not conform to the clearances requirements (see Figs 1 and 2).

#### Fitting:

- 2.1.14 Position the Restrictor Stay Vent Bracket against any sideways hinge location features or in the hinge location channel on the vent. If the vent does not have hinge location features, determine the correct position by referring to the profile manufacturers fabrication manual and measuring/markings, ('Fitting Instructions: Positions and Clearances' will help).

**Note:** The closer the Restrictor Stay is positioned to the hinge the greater the opening angle of the vent will be, subsequently the further away the Vent Bracket is positioned from the hinge the smaller the opening angle of the vent will be. See Fig. 4

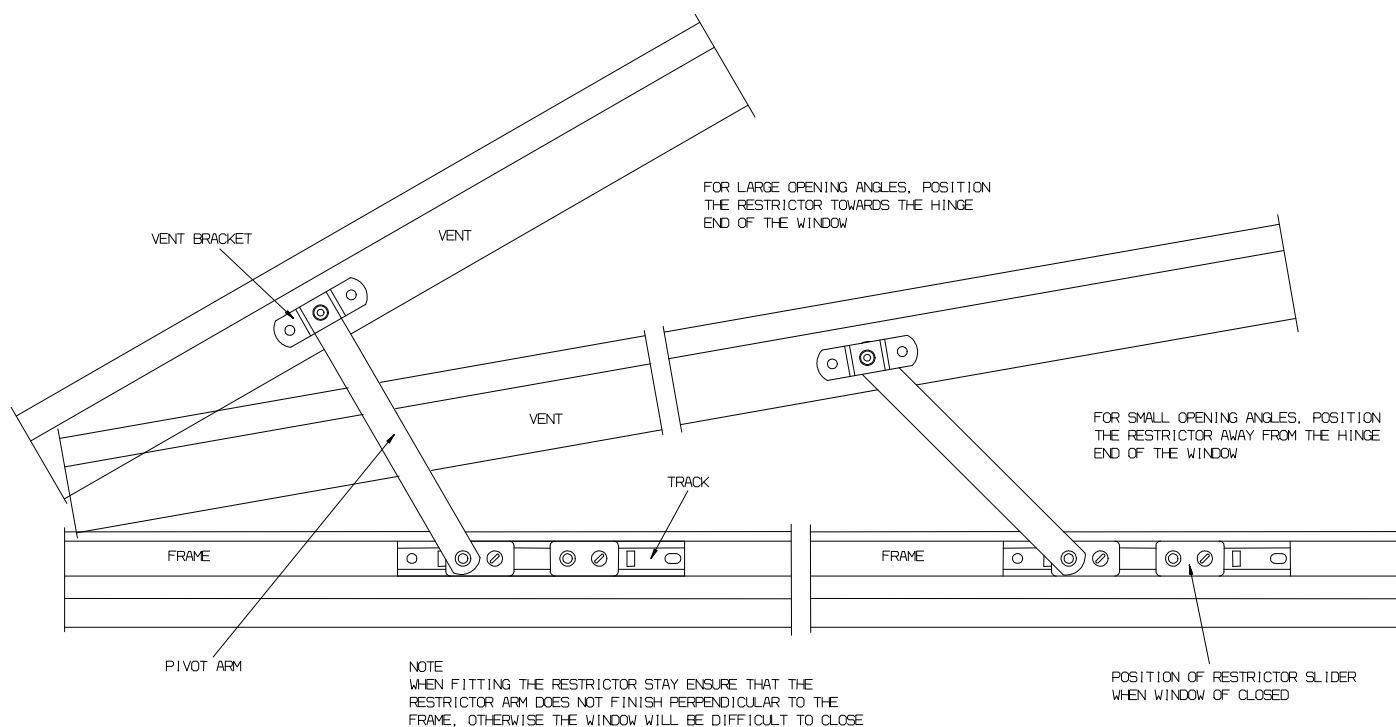


Fig. 4

#### Fixing:

- 2.1.15 Insert fixings through the holes in the Vent Bracket once you are satisfied with its position. If possible pick up on any screw location ports\* and/or reinforcement.

It is the responsibility of the user to ensure that this document is at the latest issue.

Due to our policy of continual product improvement we reserve the right to alter specifications without notice.

It is the responsibility of the window manufacturer to ensure that the finished window meets the required performance and safety specification.

© SECURISTYLE LTD 2008



Securistyle Ltd.  
Kingsmead Industrial Estate  
Princess Elizabeth Way, Cheltenham,  
Gloucestershire, GL51 7RE  
Tel: +44 (0) 1242 221200  
Fax: +44 (0) 1242 520828  
Web: www.securistyle.co.uk

# ANCILLARY DEVICES

RESTRICTOR STAYS

SECTION 2.1 SHEET 6 of 12

ISSUE: September, 2008

## FITTING INSTRUCTIONS: Vent and Frame Preparation and Fitting

### Frame Preparation and Fitting of Restrictor Stays

#### Preparation:

- 2.1.16 No routing of the profile is required unless the profile silhouette does not conform to the clearances requirements (See Figs. 1 and 2).

#### Fitting:

- 2.1.17 Position the Restrictor Stay track with the stay in its open position against any sideways hinge location features or in the hinge location channel on the frame, commonly the glazing bar clip channel. See Fig. 5

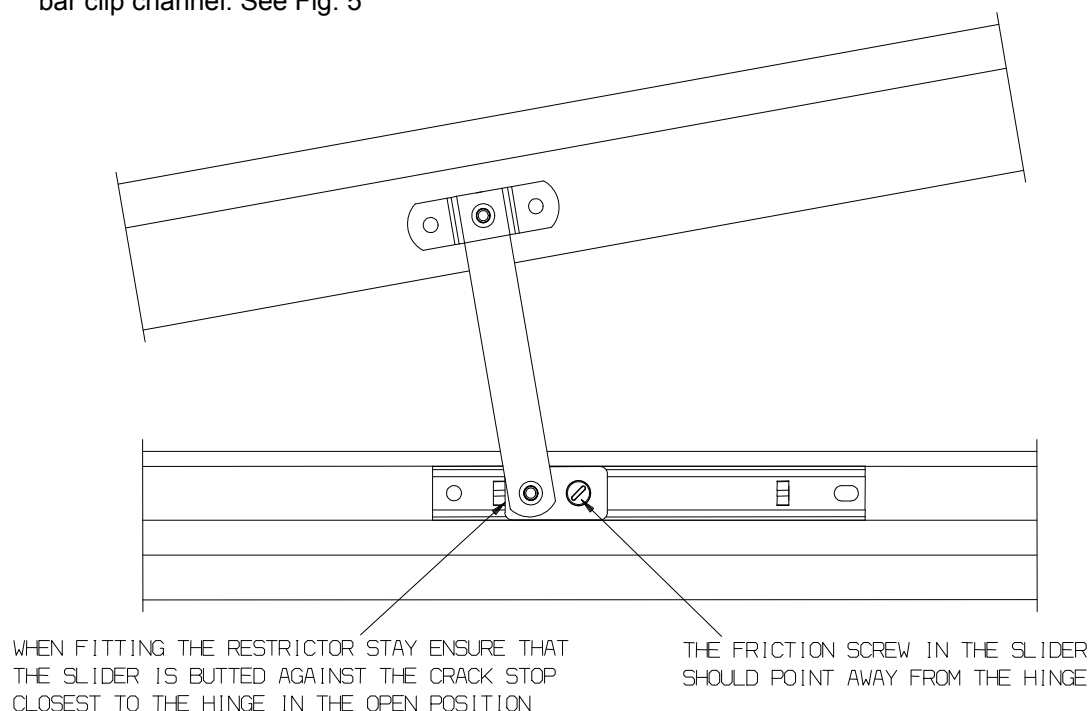


Fig. 5

#### Fixing:

- 2.1.18 Insert fixings through the slot/slots in the track in the track once you are satisfied with its position, insert the final fixing into the fixing hole/holes. If possible pick up on any screw location ports\* and/or reinforcement.

\*Certain profiles incorporate a groove to assist with screw positioning/insertion.

For screw specification refer to subsequent section.

It is the responsibility of the user to ensure that this document is at the latest issue.

Due to our policy of continual product improvement we reserve the right to alter specifications without notice.

It is the responsibility of the window manufacturer to ensure that the finished window meets the required performance and safety specification.

© SECURISTYLE LTD 2008



Securistyle Ltd.  
Kingsmead Industrial Estate  
Princess Elizabeth Way, Cheltenham,  
Gloucestershire, GL51 7RE  
Tel: +44 (0) 1242 221200  
Fax: +44 (0) 1242 520828  
Web: www.securistyle.co.uk

# ANCILLARY DEVICES

RESTRICTOR STAYS

SECTION 2.1 SHEET 7 of 12

ISSUE: September, 2008

## FITTING INSTRUCTIONS: Vent and Frame Preparation and Fitting

---

### Vent Preparation and Fitting of Detachable Restrictor Stays

#### Preparation:

- 2.1.19 No routing of the profile is required unless the profile silhouette does not conform to the clearances requirements (see Fig. 3).

#### Fitting:

- 2.1.20 Position the Restrictor Stay track inline with the hinge vent arm, parallel with any sideways hinge location features or in the hinge location channel on the frame, commonly the glazing bar clip channel.

#### Fixing:

- 2.1.21 Insert fixings through the slot/slots in the track in the track once you are satisfied with its position then insert the final fixing into the fixing hole/holes. If possible pick up on any screw location ports\* and/or reinforcement.

### Frame Preparation and Fitting of Restrictor Stays

#### Preparation:

- 2.1.22 No routing of the profile is required unless the profile silhouette does not conform to the clearances requirements. See Fig. 3.

#### Fitting:

- 2.1.23 Position the Restrictor Stay Frame Bracket inline with the track of the hinge, parallel with any sideways hinge location features or in the hinge location channel on the vent ensuring that the Vent Bracket is orientated so that the keyway is pointing away from the hinge. See Fig. 6. If the vent does not have hinge location features, determine the correct position by referring to the profile manufacturers fabrication manual and measuring/markings, ('Fitting Instructions: Positions and Clearances' will help).

**Note:** The closer the Detachable Restrictor Stay is positioned to the hinge the greater the opening angle of the vent will be, subsequently the further away the Vent Bracket is positioned from the hinge the smaller the opening angle of the vent will be. (As Fig. 4 but with the Vent Bracket attached to the Frame and the Track attached to the Vent).

---

It is the responsibility of the user to ensure that this document is at the latest issue.

Due to our policy of continual product improvement we reserve the right to alter specifications without notice.

It is the responsibility of the window manufacturer to ensure that the finished window meets the required performance and safety specification.

© SECURISTYLE LTD 2008



Securistyle Ltd.  
Kingsmead Industrial Estate  
Princess Elizabeth Way, Cheltenham,  
Gloucestershire, GL51 7RE  
Tel: +44 (0) 1242 221200  
Fax: +44 (0) 1242 520828  
Web: www.securistyle.co.uk

# ANCILLARY DEVICES

RESTRICTOR STAYS

SECTION 2.1 SHEET 8 of 12

ISSUE: September, 2008

## FITTING INSTRUCTIONS: Vent and Frame Preparation and Fitting

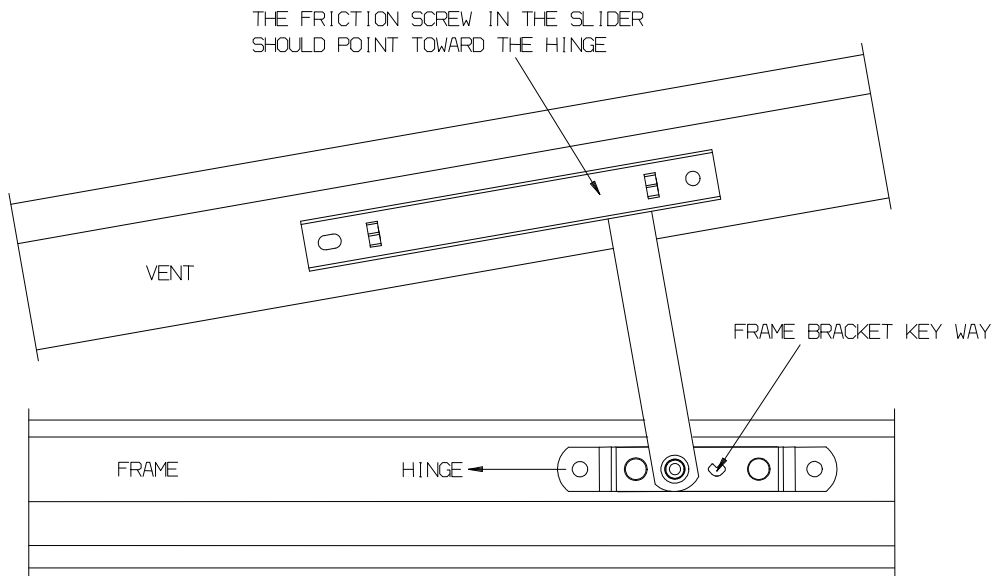


Fig. 6

### Fixing:

- 2.1.24 Insert fixings through the holes in the Frame Bracket once you are satisfied with its position. If possible pick up on any screw location ports\* and/or reinforcement.

\*Certain profiles incorporate a groove to assist with screw positioning/insertion.

For screw specification refer to subsequent section.

It is the responsibility of the user to ensure that this document is at the latest issue.

Due to our policy of continual product improvement we reserve the right to alter specifications without notice.

It is the responsibility of the window manufacturer to ensure that the finished window meets the required performance and safety specification.

© SECURISTYLE LTD 2008



Securistyle Ltd.  
Kingsmead Industrial Estate  
Princess Elizabeth Way, Cheltenham,  
Gloucestershire, GL51 7RE  
Tel: +44 (0) 1242 221200  
Fax: +44 (0) 1242 520828  
Web: [www.securistyle.co.uk](http://www.securistyle.co.uk)



# ANCILLARY DEVICES

RESTRICTOR STAYS

SECTION 2.1

SHEET 9 of 12

ISSUE: September, 2008

## FITTING INSTRUCTIONS: Detachable Restrictor Stays

### Detachable Restrictor Key Release

#### Operation

- 2.1.25 In order to release the Detachable Restrictor Pivot Arm from the Frame Bracket the user must insert the Release Key into the Key Way of the Frame Bracket and rotate it in a clockwise direction through 90°. See Fig. 7.

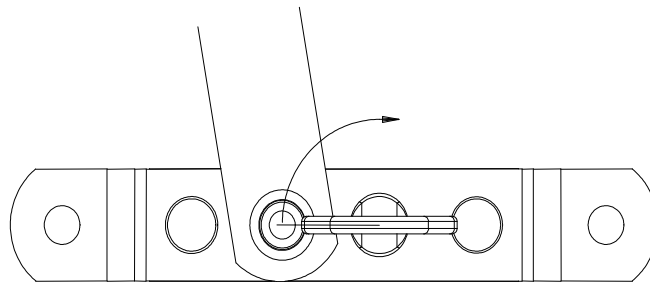


Fig. 7

- 2.1.26 The user then detaches the Pivot Arm clear from the Frame Bracket. See Fig. 8.

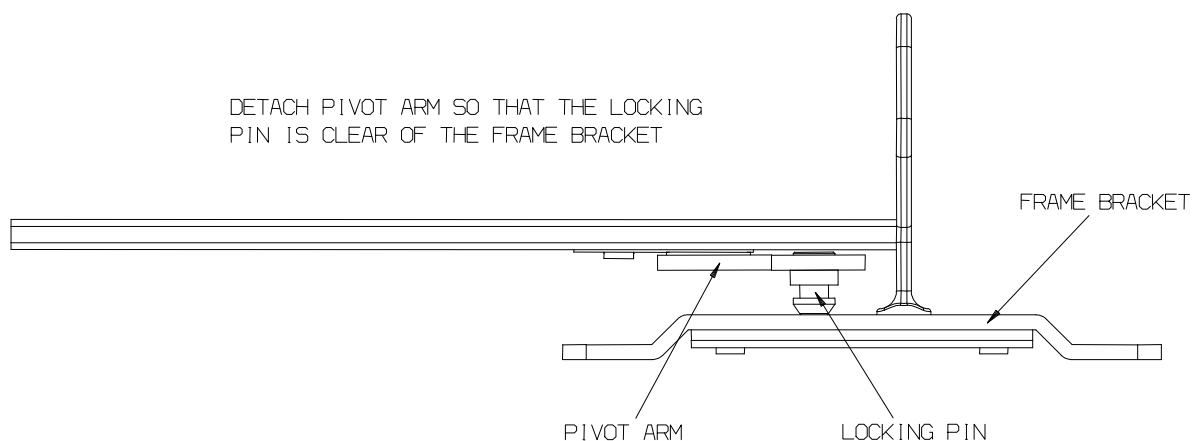


Fig. 8

It is the responsibility of the user to ensure that this document is at the latest issue.

Due to our policy of continual product improvement we reserve the right to alter specifications without notice.

It is the responsibility of the window manufacturer to ensure that the finished window meets the required performance and safety specification.

© SECURISTYLE LTD 2008



Securistyle Ltd.  
Kingsmead Industrial Estate  
Princess Elizabeth Way, Cheltenham,  
Gloucestershire, GL51 7RE  
Tel: +44 (0) 1242 221200  
Fax: +44 (0) 1242 520828  
Web: [www.securistyle.co.uk](http://www.securistyle.co.uk)

# ANCILLARY DEVICES

RESTRICTOR STAYS

SECTION 2.1 SHEET 10 of 12

ISSUE: September, 2008

## FITTING INSTRUCTIONS: Screws and Rivets

### Fixing Screws

2.1.27 On the following Restrictor Stays the fixings specified should be used: -

2.1.27.1 **Domestic Restrictor Stays** - Use No. 8 fixing screws or specialist equivalent e.g. special threads for PVCu.

2.1.28 The following constraints should be strictly adhered to:-

2.1.28.1 Pan or mushroom head screws are the preferred option. See Fig. 5

2.1.28.2 Countersunk heads are acceptable but will not produce a neat appearance. See Fig. 5

2.1.28.3 Screws with countersunk/pan heads are also an acceptable head format. See Fig. 5

2.1.28.4 Screw manufacturers recommended pilot hole sizes must be adhered to at all times and if any instructions are supplied by window system manufacturers/suppliers, such as "screw into reinforcement", it is important that they are followed.

2.1.28.5 When fitting Restrictor Stays extreme care must be taken not to strip the thread as deterioration in performance will result.

2.1.28.6 It has been shown that Austenitic fixings provide superior corrosion resistance when subject to BS 7479.

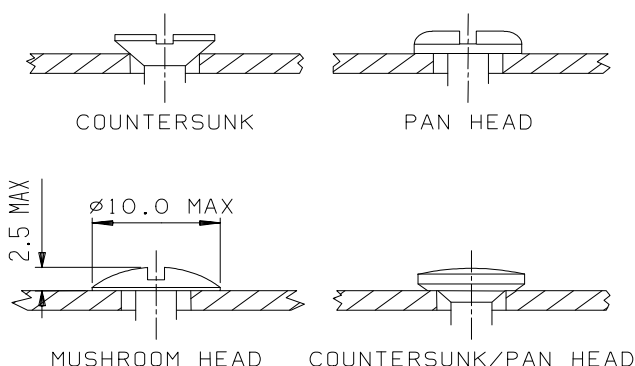


Fig. 6

**Note:** It is the responsibility of the window manufacturer to ensure that all fixing screws and rivets have adequate strength to support the weight of the window vent and the forces exerted upon it over the full life of the window.

**Not to Scale, All dimensions in mm**

It is the responsibility of the user to ensure that this document is at the latest issue.

Due to our policy of continual product improvement we reserve the right to alter specifications without notice.

It is the responsibility of the window manufacturer to ensure that the finished window meets the required performance and safety specification.

© SECURISTYLE LTD 2008



Securistyle Ltd.  
Kingsmead Industrial Estate  
Princess Elizabeth Way, Cheltenham,  
Gloucestershire, GL51 7RE  
Tel: +44 (0) 1242 221200  
Fax: +44 (0) 1242 520828  
Web: www.securistyle.co.uk

# ANCILLARY DEVICES

RESTRICTOR STAYS

SECTION 2.1 SHEET 11 of 12

ISSUE: September, 2008

## FITTING INSTRUCTIONS: Screws and Rivets

### Fixing Screws

2.1.29 On the following Restrictor Stays the fixings specified should be used: -

2.1.29.1 **Commercial Restrictor Stays/Commercial Detachable Restrictor Stays** - Use No.10 self tapping screws or M5 screws and M5 Rivnuts or a specialist equivalent i.e. with special threads for PVCu.

2.1.30 The following constraints should be strictly adhered to:-

2.1.30.1 Pan, mushroom or standard dome head screws are the preferred option.

2.1.30.2 Countersunk heads are acceptable but will not produce a neat appearance.

2.1.30.3 Screws with special combination countersunk/pan heads are also an acceptable head format. See Fig. 6 below.

2.1.30.4 Screw manufacturers recommended pilot hole sizes must be adhered to at all times and if any instructions are supplied by window system manufacturers/suppliers, such as "screw into reinforcement", it is important that they are followed.

2.1.30.5 When fitting Restrictor Stays extreme care must be taken not to strip the thread as deterioration in performance will result.

2.1.30.6 It has been shown that Austenitic and certain types of Modified Martensitic fixings provide superior corrosion resistance when subject to BS 7479.

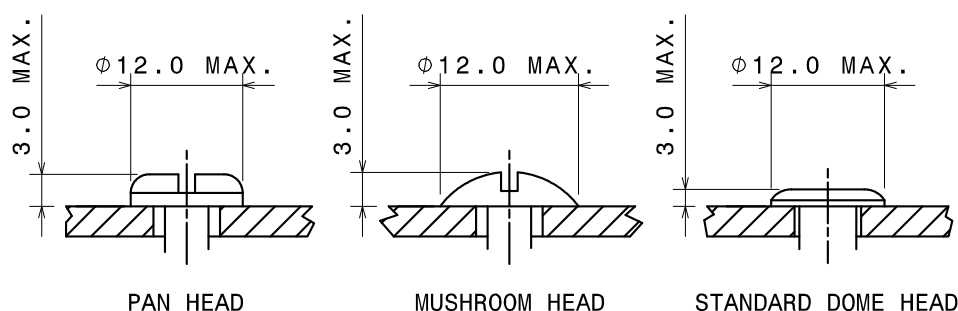


Fig. 7

**Note:** It is the responsibility of the window manufacturer to ensure that all fixing screws and rivets have adequate strength to support the weight of the window vent and the forces exerted upon it over the full life of the window.

**Not to Scale, All dimensions in inches & mm**

It is the responsibility of the user to ensure that this document is at the latest issue.

Due to our policy of continual product improvement we reserve the right to alter specifications without notice.

It is the responsibility of the window manufacturer to ensure that the finished window meets the required performance and safety specification.

© SECURISTYLE LTD 2008



Securistyle Ltd.  
Kingsmead Industrial Estate  
Princess Elizabeth Way, Cheltenham,  
Gloucestershire, GL51 7RE  
Tel: +44 (0) 1242 221200  
Fax: +44 (0) 1242 520828  
Web: [www.securistyle.co.uk](http://www.securistyle.co.uk)

# ANCILLARY DEVICES

RESTRICTOR STAYS

SECTION 2.1

SHEET 12 of 12

ISSUE: September, 2008

## FITTING INSTRUCTIONS: Screws and Rivets

### Fixing Rivets

2.1.31 Fixing rivets (pop and peel blind rivets) should be 5mm or 3/16 inch diameter and of a length to suit the total riveting thickness as recommended by the rivet manufacturer. The following additional constraints must be adhered to:-

2.1.31.1 Head maximum sizes must not exceed those shown below.

2.1.31.2 All rivet manufacturers recommendations must be observed.

2.1.31.3 Only stainless steel rivets are recommended for use by SECURISTYLE® Ltd.

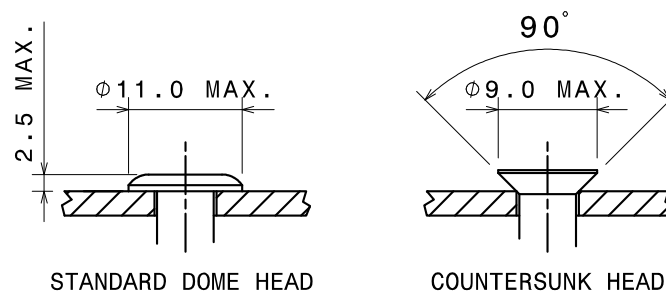


Fig. 8

**Note:** It is the responsibility of the window manufacturer to ensure that all fixing screws and rivets have adequate strength to support the weight of the window vent and the forces exerted upon it over the full life of the window.

**Not to Scale, All dimensions in inches & mm**

It is the responsibility of the user to ensure that this document is at the latest issue.

Due to our policy of continual product improvement we reserve the right to alter specifications without notice.

It is the responsibility of the window manufacturer to ensure that the finished window meets the required performance and safety specification.

© SECURISTYLE LTD 2008



Securistyle Ltd.  
Kingsmead Industrial Estate  
Princess Elizabeth Way, Cheltenham,  
Gloucestershire, GL51 7RE  
Tel: +44 (0) 1242 221200  
Fax: +44 (0) 1242 520828  
Web: [www.securistyle.co.uk](http://www.securistyle.co.uk)