

Intermittent Fans - Axial

Extract Fans

For use in residential or non-residential applications

Ideal for air-extraction in bathroom, toilet and kitchens. Suitable to extract stale air directly to the outside or through short length ducting. Units can be wall/panel, ceiling and window mounted.

Versions

Run-on timer - The fan is equipped with a timer circuit adjustable from $\pm 1'$ to 25'. Operation: after switching off, the fan continues to run for the pre-set period of time.

Humidistat-timer - The fan is provided with an electronic circuit having a humidity sensor on board (adjustable from 50% to 95% RH) and a timer, adjustable from $\pm 1'$ to 25'. Operation: when the percentage of relative humidity is higher/lower than the pre-set threshold, the fan is automatically activated/deactivated. After switching off, the fan continues to run for the pre-set period of time.

Features & Benefits

- IPX4 protection degree
- Aesthetic front flat cover for modern interior design easily removed for cleaning
- Rigid optimised spigot support preventing distortion with strengthened guard and design to maximise airflow
- Integral back-draught shutter fitted as standard to prevent air flowing back into the room when the fan is off
- Low power consumption: 100mm model has less than 8 watts operating power consumption for energy saving
- Totally recyclable plastic components, environmentally friendly
- Double insulated: no earth connection is required
- Unique design winglet-type impeller, providing enhanced aerodynamic properties, low noise and increased efficiency
- Electrical supply 220-240 V ~ 50-60Hz

Extract



For use with Titon Trickle Ventilators.



Product Codes

TP241HT - TIFA100HT

Intermittent Fan Axial Ø100mm, Humidity and Timer

TP242T - TIFA120T

Intermittent Fan Axial Ø120mm, Run-on Timer

TP243T - TIFA150T

Intermittent Fan Axial Ø150mm, Run-on Timer

Standards

Designed and manufactured in accordance with EN60335-2-80 (Low Voltage Directive) and the EMC Directive (Electromagnetic Compatibility).

Air performance measured according to ISO 5801 at 230V 50Hz, air density 1.2 Kg/m³. CE marked.

Specification

Finish: White gloss RAL 9010, UV resistant

Materials: Shock-proof ABS casing

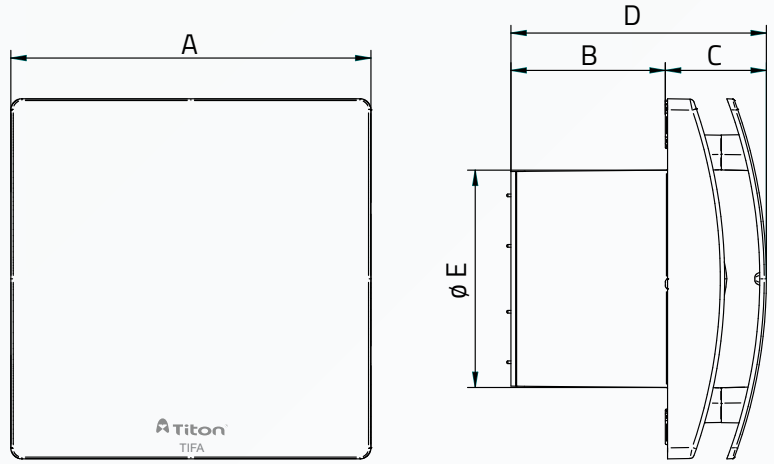
Guarantee period: 2 years (parts only)

Electrical: 220-240 V ~ 50Hz

Installation: Install in accordance with regulatory requirements, such as the Ventilation: Approved Document F and the Residential Ventilation Association recommendations.

Maintenance: Service, clean, replace subject to local environment - see product manual.

Drawing & Dimensions

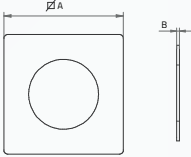


Dimensions in mm

Model Size	A	B	C	D	Ø E	Weight Kg
TIFA100HT	164	70	46	116	99	0.6
TIFA120T	184	81	48	129	119	0.9
TIFA150T	218	97	52	149	148	1.2

Dimensions in mm

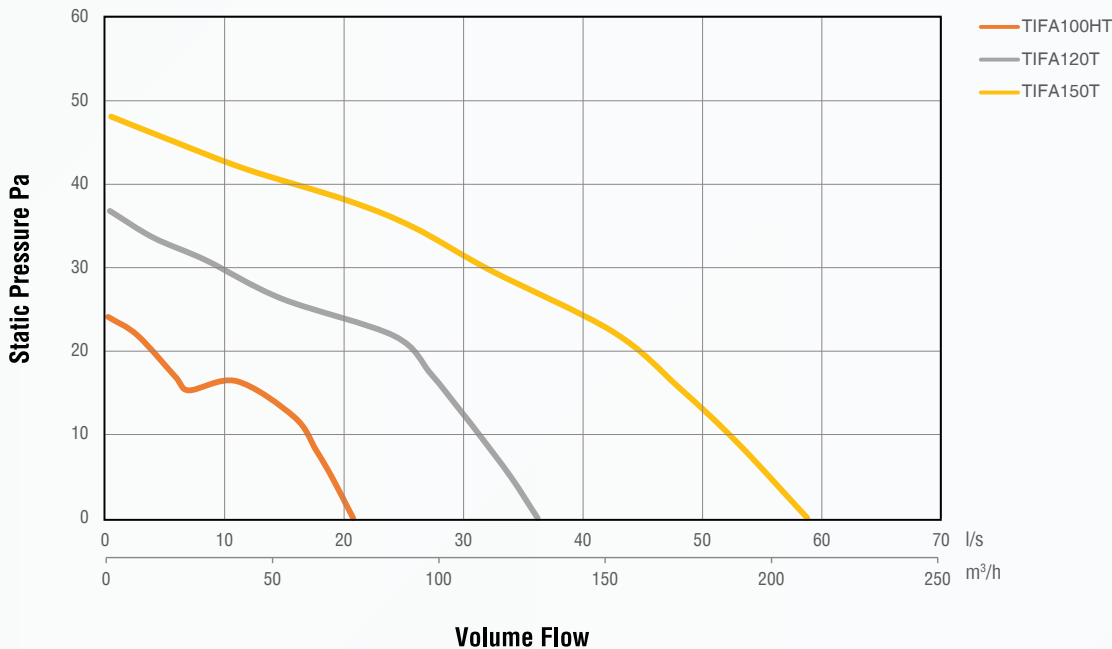
Ceiling IPX4 Kit



Model	TP202/ Ø100	TP205/ Ø120	TP205/ Ø150
A	173	196	230
B	5	5	5

Gasket made of EPDM rubber to guarantee the IPX4 degree of protection against moisture in case of ceiling installations.

Performance Details



Model	Airflow m ³ /h	Airflow l/s	Static pressure Pa max	Max power (W)	Sound pressure dB(A) @ 3m	Max ambient temp °C
TIFA100HT	75	21	24	8	26	50
TIFA120T	130	36	37	14	34	
TIFA150T	212	59	48	24	42	