

CME Spare Parts

Customer- General

Model	CME 1		CME1 Q+				CME2 Q+				CME2.1 Q+				CME2 Q+ Live Switching		CME2.1 Q+ Live Switching		CME3 Q+		CME3.1 Q+		CME3 Q+ Live Switching		CME3.1 Q+ Live Switching			
	TP350	TP351	TP300	TP300A	TP300HA	TP301A	TP301HA	TP302A	TP302HA	TP303A	TP303HA	TP312A	TP312HA	TP313A	TP313HA	TP304HA	TP305HA	TP312HALS	TP313HALS	TP332A	TP332HA	TP342A	TP342HA	TP334HA	TP342HALS			
Units & Products shown in RED are Obsolete																												
Control PCB	XP30062*		●																									
	XP30162	FW0002		○		○																						
	XP30162	FW0021		●		●		●		●		●		●						●		●						
	XP30262	FW0015			○		○																					
	XP30262	FW0022			●		●		●		●		●		●						●		●			●		●
	XP6210378	FW0022														●	●	●	●					●		●		●
Motor	XP35061		●	●																								
	XP30061**			○	○	○	○	○																				
	XP30061A**			●	●	●	●	●																				
	XP30261							●	●	●	●		●	●		●	●			●	●			●				
	XP6111351											●	●	●	●			●	●			●	●			●		
Transformer	XP35067		●	●																								
Screw Pack	XP254		●	●	●	●	●	●	●	●	●	●	●	●	●	●	●	●										
Port Cover	XP30036		●	●	●	●	●	●	●	●	●	●	●	●	●	●	●	●										
	XP4010820																			●	●	●	●	●		●		
Cover	XP30002		●	●	●	●	●	●	●	●	●	●	●	●	●	●	●	●										

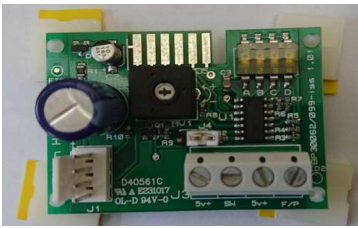
Used with XP30061
 Used with XP30061A & XP30261
 Used with XP30061
 Used with XP30061A & XP30261

Used with XP30162 FW0002 & XP30262 FW0015
 Used with XP30162 FW0021 & XP30262 FW0022

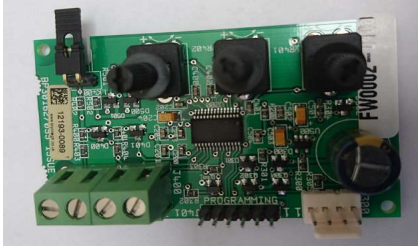
XP30162U
TP303A
TP303HA

* if XP30062 is required use XP30162U
 ** If XP30061 Or XP30061A is required then supply TP303A Or TP303HA (second fix kits)

CME Q+ PCB's



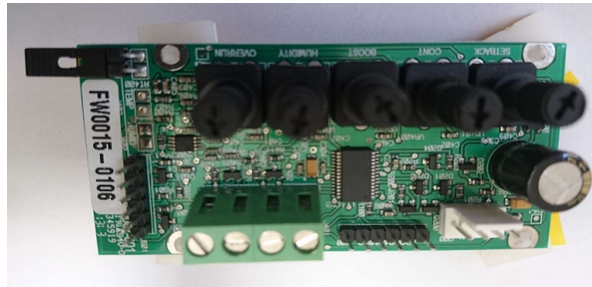
XP30062



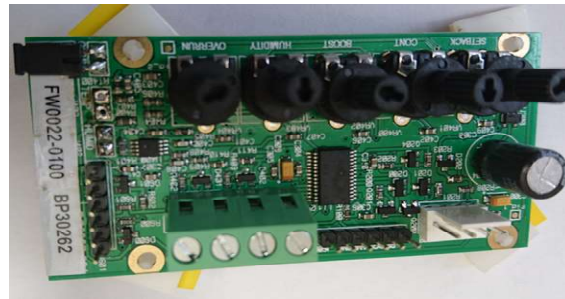
PCB XP30162 Firmware FW0002



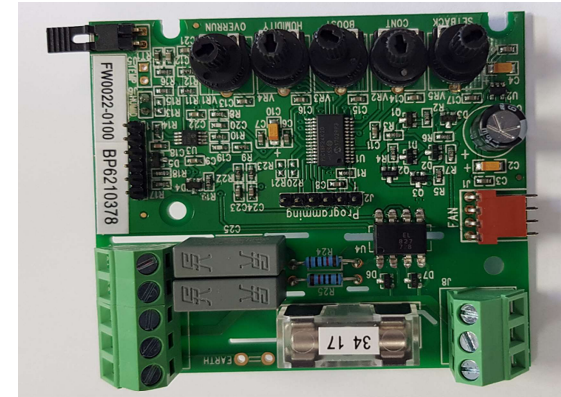
PCB XP30162 Firmware FW0021



PCB XP30262 Firmware FW0015



PCB XP30262 Firmware FW0022



PCB XP6210378 FW0022