



Extract Fans - Ventilation Systems

Overview Brochure

Intermittent - Extract Fans

Titon's range of TIFA Axial intermittent extract fans are ideal for air-extraction in wet rooms such as bathroom, toilet and kitchens.

Suitable to extract stale air directly to the outside or through short length ducting. Our fans can be mounted on a wall/panel, ceiling and window mounted depending on the requirement.



**TIFA
Axial**

- Available in Ø100 mm, Ø120 mm & Ø150 mm
- Airflow up to 59 l/s (212 m³/h)
- Suitable for bathrooms, toilets and kitchens (adjacent to cooker only within kitchens)
- IPX4 protection degree
- Aesthetic front flat cover for modern interior design easily removed for cleaning
- Rigid optimised spigot support preventing distortion with strengthened guard and design to maximise airflow
- Integral back-draught shutter fitted as standard to prevent air flowing back into the room when the fan is off
- Low power consumption: 100mm model has less than 8 watts operating power consumption for energy saving
- Totally recyclable plastic components, environmentally friendly
- Double insulated: no earth connection is required
- Unique design winglet-type impeller, providing enhanced aerodynamic properties, low noise and increased efficiency.

Specification

Finish: White gloss RAL 9010, UV resistant.

Material: Shock-proof ABS casing.

Guarantee Period: 2 years (parts only).

Electrical: 220-240 V ~ 50Hz.

Ceiling IPX4 Kit available. Gasket made of EPDM rubber to guarantee the IPX4 degree of protection against moisture in case of ceiling installations.

Product Range

Intermittent Fan Axial Ø100mm (TP241HT) – Humidity and Timer.
Intermittent Fan Axial Ø120mm (TP242T) and Ø150mm (TP243T) – Run-on Timer.

Standards

Designed and manufactured in accordance with EN60335-2-80 (Low Voltage Directive) and the EMC Directive (Electromagnetic Compatibility).

Air performance measured according to ISO 5801 at 230V 50Hz, air density 1.2 Kg/m³.

CE marked.

Titon's TIFC Centrifugal intermittent extract fan is ideal for air-extraction in bathroom and small premises.

A powerful extract fan, designed to overcome the resistances of long ducting systems. Our fans can be mounted on wall/panel and ceiling mounted or designed for surface or flush (plasterboard) installation.



**TIFC
Centrifugal**

- Available in Ø100mm
- Airflow up to 27 l/s (97 m³/h)
- Suitable for bathrooms and small premises
- IPX4 protection degree
- Aesthetic front flat cover for modern interior design easily removed for cleaning
- Removable filter in PP to protect the impeller and the motor. Easy to remove for cleaning
- Integral back-draught shutter to prevent air flowing back into the room when the fan is off
- Improved performance thanks to the unique air straightener to optimise performance and reduce power consumption
- Totally recyclable plastic components, environmentally friendly
- Double insulated: no earth connection is required
- Forward curved centrifugal impeller, providing enhanced aerodynamic properties, low noise and increased efficiency.

Specification

Finish: White gloss RAL 9010, UV resistant.

Material: Shock-proof ABS casing.

Guarantee Period: 2 years (parts only).

Electrical: 220-240 V ~ 50Hz.

Ceiling IPX4 Kit available. Gasket made of EPDM rubber to guarantee the IPX4 degree of protection against moisture in case of ceiling installations.

Product Range

Intermittent Fan Centrifugal Ø100mm (TP251HT) – Humidity and Timer.

Standards

Designed and manufactured in accordance with EN60335-2-80 (Low Voltage Directive) and the EMC Directive (Electromagnetic Compatibility).

Air performance measured according to ISO 5801 at 230V 50Hz, air density 1.2 Kg/m³.

CE marked.

General - Extract Fans

Titon's Purge ventilation unit has been designed to satisfy the Building Regulations Part F 2010 requirement for purging as set out in Appendix B*.

The Purge unit allows the rapid removal of stale, odorous and poor quality air from the dwelling allowing a healthier more comfortable environment to be reinstated.



**Purge
Fan**

- Accepts 220 x 90mm rectangular ducting
- Airflow up to 161 l/s (579 m³/h)
- Achieves 4 air changers per hour
- In line configurable or 90° configurable option with Ø150mm inlet available
- High efficiency EC fan
- Supports CIBSE's TM59 Design methodology for the assessment of overheating risk in homes
- Can be used in conjunction with Part L overheating to provide thermal comfort to properties
- 100% variable speed control for commissioning set point
- For use in rooms up to 45m²
- Motorised damper available to allow for 'make up air' to work in conjunction with the Purge Fan
- Low Profile
- Lightweight for easy handling and install
- IPX2 water resistant.

Specification

Finish: Natural Zintec.

Material: Zintec sheet steel casing.

Guarantee Period: 2 Years.

Electrical: 230V – 50/60Hz, 3A fuse.

Product Range

Purge Ventilation Unit (TP625)

Accessories: Ø150 Back Draft Damper (TP629), Powered Damper Actuator (TP630) and Ceiling Cover Kit (Ø150 only) (TP631).

Standards

EU RoHS Directive Compliant.

Conforms to requirements of EC council Directives relating to electromagnetic Compatibility and Electrical Safety: 2006/95/EC (LVD), 2004/108/EC (EMC).

EN 60335-1:2002/A2:2006, EN 60335-2-80:2003/A1:2004.

CE Marked.

*Manually controlled intermittent ventilation of rooms or spaces at a relatively high rate to rapidly dilute high concentrations of pollutants and/or water vapour from occasional activities, equivalent to 4 air changes an hour.

Titon's high performance inline Mixed Flow Inline Fan range is suitable for bathrooms, kitchens and other residential applications.

Capable of supplying or extracting air, depending on individual requirements, the fan can be fitted in a loft or ceiling. Available in diameters of 100mm, 125mm, 150mm and 160mm, the unit also boasts three speeds.



**Mixed Flow
Inline Fan**

- Available in Ø100mm, Ø125mm, Ø150mm & Ø160mm diameters
- Airflow up to 179 l/s (644 m³/h)
- Ideal for kitchen, bathroom, utility and general extract applications
- The powerful in-duct mounted mixed flow fan has been designed to produce higher working pressures for applications which require high airflows
- Compact and ideal for low profile ceilings
- High quality ball bearing motors
- 3 speed operation (hard wired)
- Ingress protection to IP55
- Max operating temperature 50°C
- Overrun timer
- Protection Class II
- For use with rigid ducting as advised by Part F.

Specification

Material: Black plastic.

Guarantee Period: 1 year.

Electrical: 230V – 50/60Hz, 3A fuse.

Product Range

Mixed Flow Inline Fan - Sizes: Ø100mm (TP220T), Ø125mm (TP221T), Ø150mm (TP222T) and Ø160mm (TP223T).

Standards

Conforms to requirements of EC council directives.

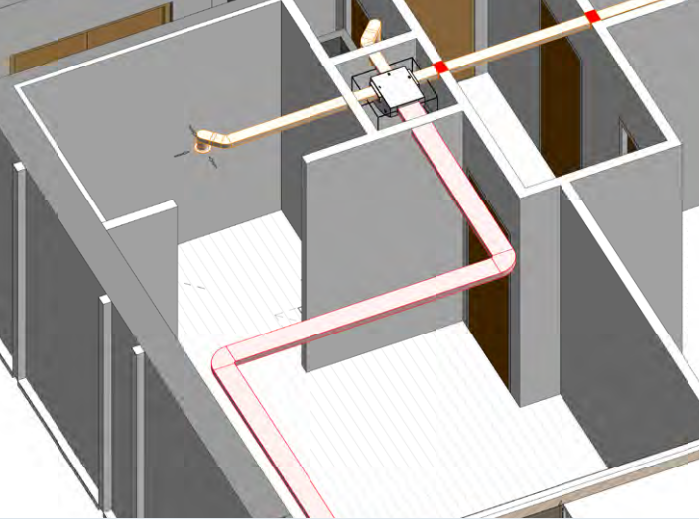
Relating to Electromagnetic Compatibility and Electrical Safety: EN60335-1, EN60335-2-80, EN55014-1, EN55014-2, EN61000-3-2, EN61000-3-3.

CE Marked.

Rigid, Semi Rigid & Self-Seal Thermal Ducting

Titon offers a comprehensive range of ducting and terminals to complement our fan units and we advise you ensure the appropriate components are selected in accordance with Regulatory, Best Practice and SAP Q requirements.

The range includes Titon exclusive product for more efficient performance. Comprehensive advice is available from Titon on request. Using ducting or duct accessories from other sources may compromise system performance.



Expert Design, Support and Help

For larger or more complicated designs, Titon has a dedicated Sales and Technical Departments supporting the Ventilation Systems Division, offering extensive product knowledge to aid and support our customers.

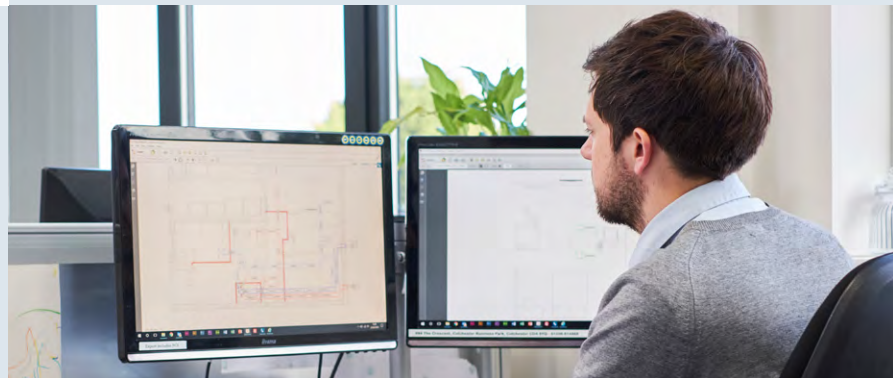
The Design Office can receive drawings of dwellings and provide detailed ventilation designs with calculated ventilation capabilities based on duct run lengths and unit settings.

Titon Ventilation Systems has every department covered to help support and assist our customers throughout.

Sales & Service

Titon employs specialists for each market sector in regional locations, in order to give fast and efficient support to customers and specifiers. The sales teams have a technical background to assist in application problems and offer 'hands-on' advice.

Putting our customers first is at the forefront of everything we do; listening, supporting and creating an efficient sales process is high on our agenda.

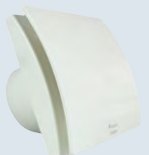
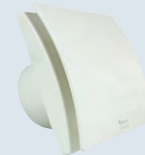
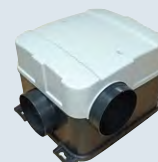
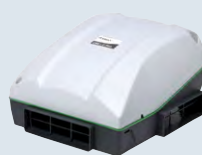
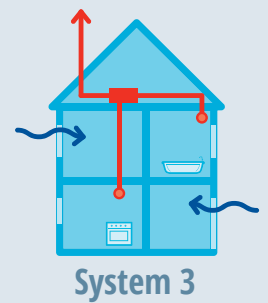


Alternative Ventilation - Continuous Mechanical Extract and background ventilators

Commonly known as 'System 3' it is mainly used in new build dwellings due to the need to incorporate ductwork within the building fabric. System 3 is particularly suited to dwellings with single façades.

How does it work?

The System uses background ventilators, usually trickle ventilators fitted in windows and one centrally located continuously running mechanical extract fan with ducts running to the moisture producing areas or "wet rooms" such as kitchens and bathrooms. A boost facility when required provides rapid extraction when necessary to remove higher levels of pollutants.



Background/Trickle Vents

CME2 Q Plus
cMEV

CME3 Q Plus
cMEV

Solitude
dMEV

Solace
dMEV