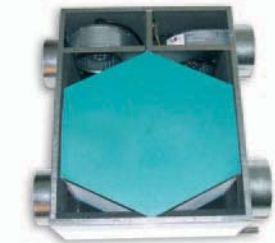




Key features

Type:	Mechanical ventilation with heat recovery
Application:	Wholehouse system
Control options:	4 speed
Legislation:	Building Regulations BRE Digest 398 (1994)
Spigot diameter:	125mm



Fitted with one of the most efficient heat recovery cells available

The Range

Designed for the smaller dwelling the Titon **WHR150H** is a slimline unit designed for horizontal or vertical installation where space is at a premium. It is ideal for recessed fitting in ceilings, in a coat cupboard or in lofts with limited space.

WHR150V is a vertical version with all spigots on top of the unit, making it particularly suitable for installation in kitchen cupboards.

Fitted with one of the most efficient heat recovery cells available, the **WHR150** has multispeed fans which can be set according to the volume of the home, and a compact antibacterial condensate drain system.

WHR150R is fitted with 'system-side' Profile 60 multi spigots for direct connection to Titon flat ducting.

		WHR150H	WHR150R	WHR150V
Max house volume (m ³)		300	300	300
Room side spigots		circular	rectangular	circular
House side spigot size (mm)		Ø125	204 x 60	Ø125
External spigot size (mm)		Ø125	Ø125	Ø125
Efficiency (%)		92	92	92
No. speeds		4	4	4
Performance (m ³ /h)	4	150	150	150
	3	130	130	130
	2	100	100	100
	1	60	60	60
Max static pressure (Pa)	high	350	350	350
Max sound pressure (dBA@3m)	high	34	34	34
Power (W)	high	146	146	146
	low	67	67	67
Roof space fitment		■	■	■
Horizontal installation		■	■	
Vertical installation				■
Weight (kg)		25	25	25
Guarantee (years)		3	3	3

Models

WHR150H

- Slimline insulated steel case with sealed access panel. Suitable for ceiling or loft mounting in confined spaces
- High efficiency counterflow heat recovery cell with up to 92% efficiency depending on volume setting
- Multispeed double inlet fans for whisper quiet performance. Speeds are selected at installation based on the required volume/duty of the dwelling in accordance with Building Regulations Part F. A remotely fitted low/boost switch is provided with the unit
- Hygienic anti-bacterial condensate tray and outlet
- Fitted with 125mm spigots

WHR150R

- As WHR150H
- Fitted with four flat duct spigots for connection to Profile60 duct

WHR150V

- As WHR150H
- Designed for vertical installation with all spigots on top of unit

Options:

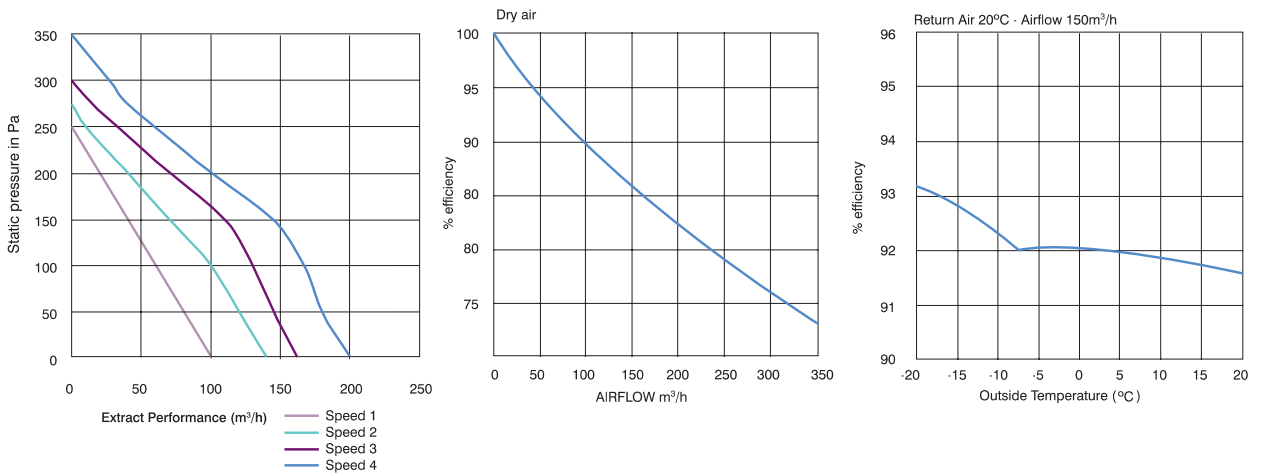
- Anti-vibration pads for loft mounting

Controllers

Included as standard

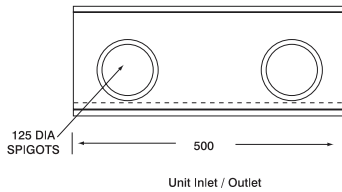
- The wall mounted single gang controller is fitted remotely in a convenient position for the user to select trickle or boost speed. The speeds are selected at installation according to the duty requirements of the dwelling

Performance

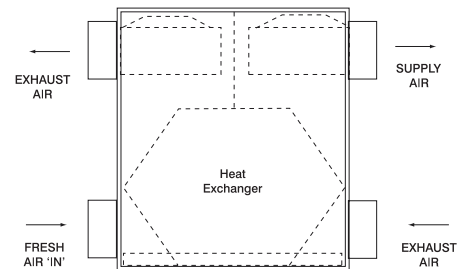
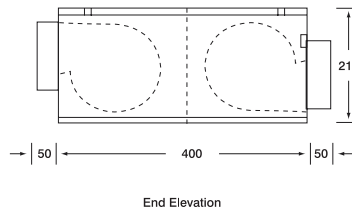
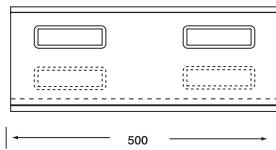


Dimensions

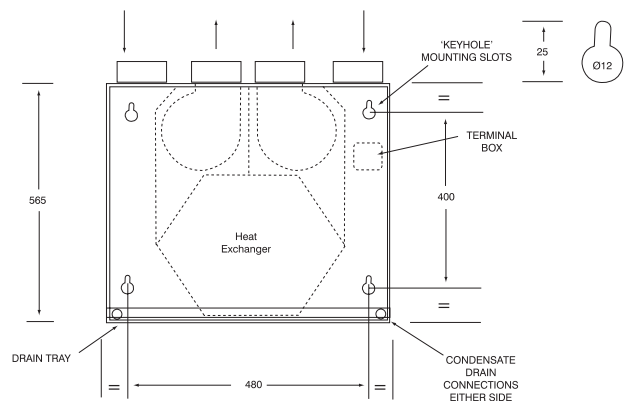
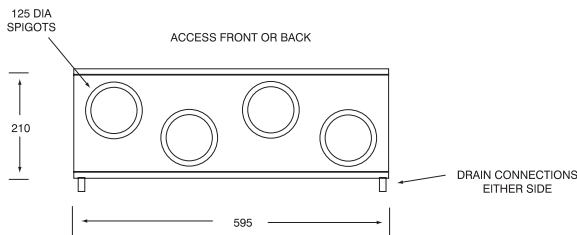
WHR150H



WHR150R



WHR150V



MARKETING DIVISION

International House, Peartree Road, Stanway, Colchester, Essex CO3 0JL
Tel: +44 (0) 1206 713800 Email: enquiries@titon.co.uk Web: www.titon.com