

# Titon FireSafe® - 100mm Push Through Wall Kit

## For use with Titon's dMEV and CME Q Plus Ranges

The **new** Titon FireSafe® 100mm Push Through Wall Kit is a circular high flow terminal designed for powered ventilation systems offering low resistance to airflow, but high resistance to fire as set out in Approved Document B (fire safety) volume 1: Dwellings, 2019 edition.

Ideal for new build, refurbishment and social housing residential applications, it is constructed from sheet steel (A1) and polyester powder coated to classification A2-s1, d0.

Titon FireSafe® 100mm Push Through Wall Kit is designed to be installed from the inside of the dwelling and will create a seal to the external wall. The range consists of a Ø100 round version at 630mm long.

## Features & Benefits

- Material 0.6 – 1.0mm hot dipped galvanised sheet, fire class A1 'no contribution to fire'
- Polyester powder coating meeting EN13501-1 classification A2-s1,d0
- Ideal for retrofit where mould and condensation are a major problem
- Designed for installation with Titon Ultimate® dMEV
- Can be cut to desired wall thickness
- Performance tested to BS EN13141-2:2010
- Corrosion resistance - salt spray tested to BS EN ISO 9227:2012
- Special paint finishes available depending on quantity
- Compatible with thermal and rigid ducting
- Compatible with Titon's range of MEV fans
- Rubber round gasket to seal with external wall
- Complies with the latest standard as set out in Approved Document B (fire safety) volume 1: Dwellings, 2019 edition
- High flow terminal designed for powered ventilation systems offering low resistance to airflow and high resistance to fire

FireSafe



### Description

Titon FireSafe® 100mm Push Through Wall Kit

### Product Codes

TA425 - Titon FireSafe® 100mm Push Through Wall Kit, Ø100 and 630mm long

### Specification

#### Materials:

Hot Dipped Galvanised Steel

#### Paint:

Powder Coated (A2-s1, d0 classification to EN 13501-1)

**Rubber Gasket:** Thermoplastic Elastomer (TPE)

**Finishes:** Terracotta and White\*

Colour Reference (add to end of part number)

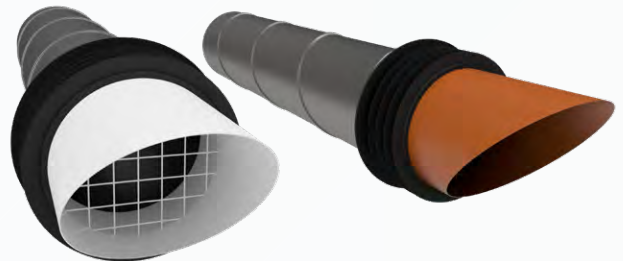
/086 - Terracotta (Matt RAL 8004)

/151 - White (Matt RAL 9010)

\*Terminal only (excluding ducting) and other colours available at request.



Titon Ultimate® dMEV



#### Installation:

Install in accordance with Residential Ventilation Association Good Practice recommendations – details on request.

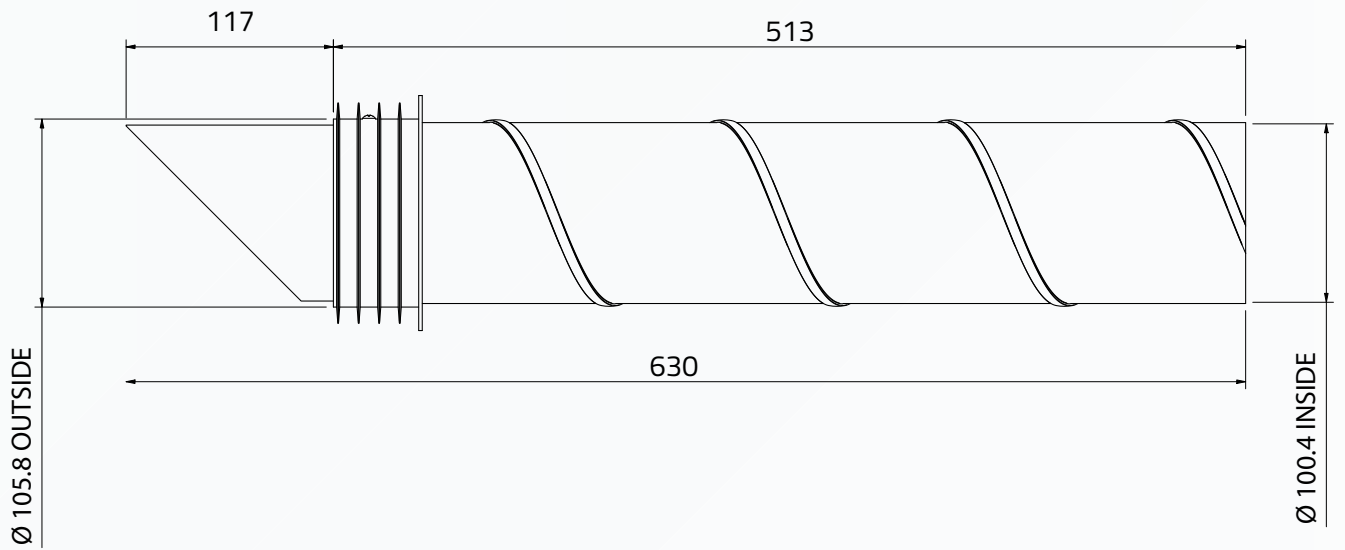
**Maintenance:** Wipe with a damp cloth and remove any blockages on a regular basis.

#### Free Area:

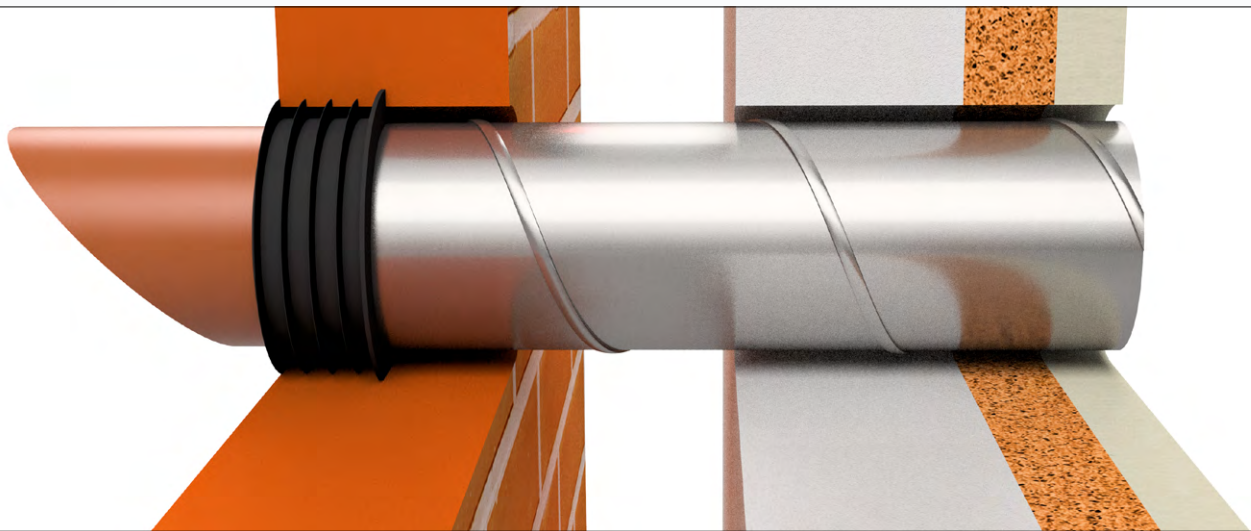
AAO = 6174 mm<sup>2</sup>

## Drawings & Dimensions

TA425 - Titon FireSafe® 100mm Push Through Wall Kit



Dimensions in mm



## High Flow Terminal Resistance

TA425 - Titon FireSafe® 100mm Push Through Wall Kit

— Exhaust Air

