

Ceiling Fan Cuff

INSTALLATION INSTRUCTIONS

This installation guide is intended for general information only and all details should be checked against relevant supporting test evidence and certification.

Product Code	PVC Duct Size (mm)	Recommended hole dia. (mm)
CFC100	Ø100mm	Ø135mm



CFC Ceiling Fan Cuff



1. Cut the plasterboard aperture to suit the PVC duct spigot as per the table above.



2. Centralise the PVC duct spigot within the hole.



3. From the underside push the Quelfire CFC up into the aperture around the PVC duct ensuring the spring clip clamps fully back onto the plasterboard and that the Quelfire CFC is clamped tight in position.



Ceiling Fan Cuff INSTALLATION INSTRUCTIONS



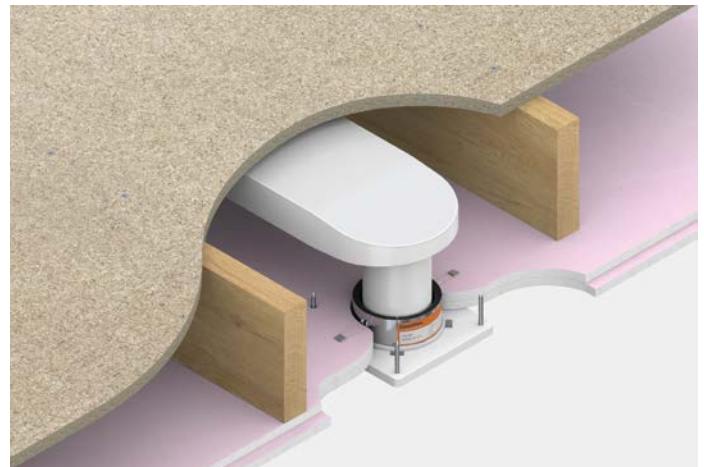
4. Make sure the gap between the CFC and the plasterboard is clean of any debris and remove dust from all edges. Seal the small gap between the CFC and the plasterboard, and around the power cable with QuelStop Acrylic Sealant.



5. Connect the ceiling fan to the vent duct



6. Install the ceiling fan to the plasterboard with correct screw fixings in accordance with the ceiling fan manufacturers requirements.



The CFC has been tested in the scenario shown on the specific manufacturers fan units. The customer/installer should satisfy themselves, or consult a fire engineer that the product, test data available, standards to which the product is tested, fan units and ducting, floor/ceiling construction is applicable and satisfactory for their specific scenario as Quelfire are not able to comment on each and every scenario.

Technical Support & Guidance:

Should you require any further information regarding this product, please do not hesitate to contact the technical department at Quelfire Ltd.

Tel: **0161 928 7308**. Email: **technical@quelfire.co.uk**

Please be aware that this document is intended for general information only and all details should be checked against all relevant supporting test evidence, certification and installation guidelines. Use of alternative components or deviations from the instructions in any way is likely to mean that the installation will not comply with the assessed rating.

Quelfire Ltd does not accept responsibility for the consequences of using Quelfire products in applications or for purposes not authorised by Quelfire Ltd. Expert advice should be sought where such applications are contemplated.

The policy of Quelfire Ltd is one of constant improvement. Installers should therefore ensure they are working from the latest published drawings and instructions. Whilst Quelfire will endeavour to keep its publications up to date, the accuracy of the information contained within this drawing may be affected by pertinent changes in the law or regulatory requirements and alterations or amendments to the specification of Quelfire products.

All information contained in this document is given in good faith and is provided for guidance only. Any drawings provided are for illustrative purposes only. As Quelfire Ltd has no control over the methods or competence of installation and of prevailing site conditions, no warranties, expressed or implied, is intended to be given as to the actual performance of the product mentioned or referred to herein and no liability whatsoever will be accepted for any loss, damage or injury arising from the use of the information given.